

## WPC Cladding Alterio

The Cascade Alterio cladding panels is the future of sustainable timber facades. They are a combination of ground breaking sustainable design & state of the art production.

Produced in India by Himalaya Global in the advanced 1,00,000 Sq ft production plant, Cascade Alterio panels are our new variation. Popular and market leading Cascade Panels. Cascade Alterio is made of 60% natural timber and 40% recycled polymer. The panel's construction is a wood plastic composite (WPC) core encased by a hybrid high performance polymer capping.

The Cascade Alterio panels are designed to look like natural timber but need zero maintenance.



Profile shown: Alterio Berlin



In an horizontal application our unique taper in the design ensures the rainwater flows smoothly Without any stagnation. This ensures stability of the profile and guards against any leakages into the building structure.



Cascade Alterio are available in 6 wonderful colors



Berlin



Dew



Clarion



Ash



Brazilian walnut

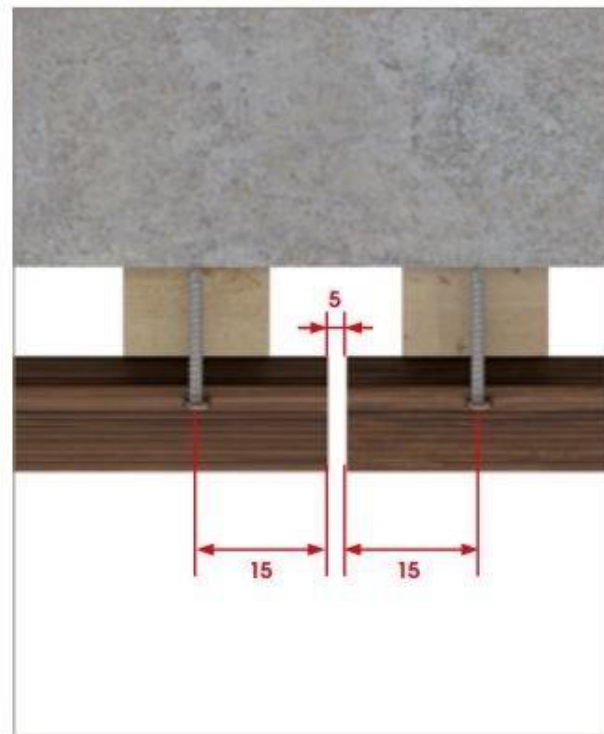
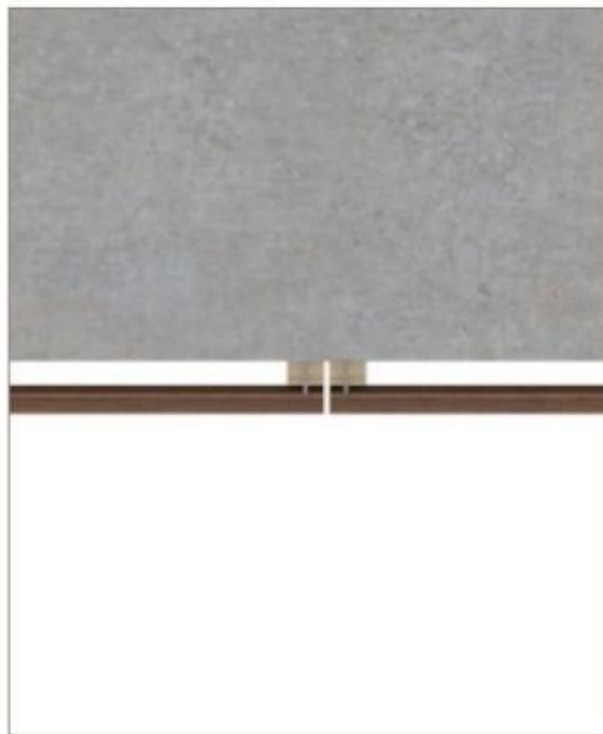
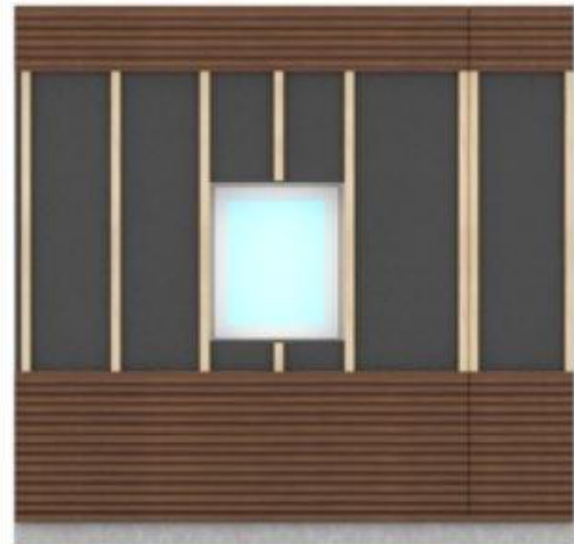
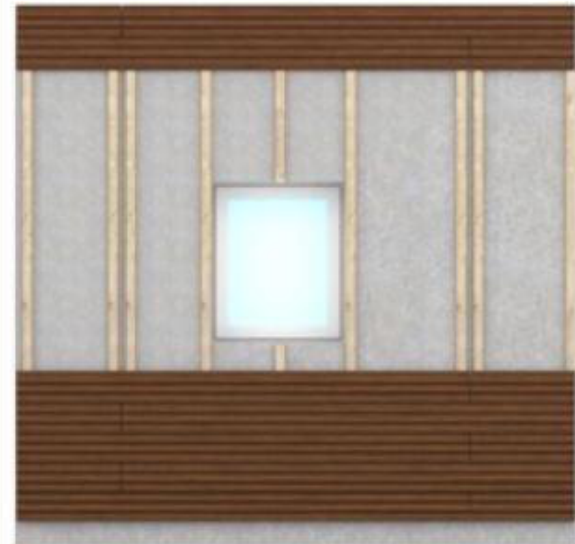


Oslo

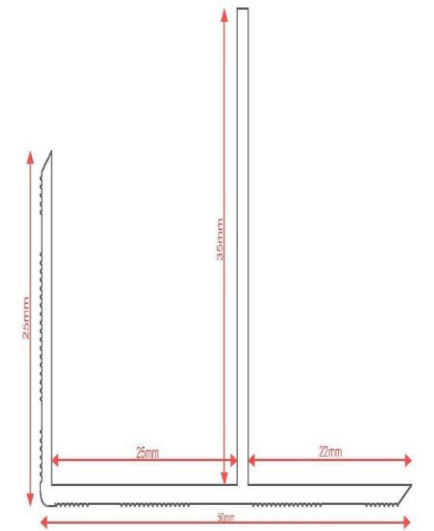
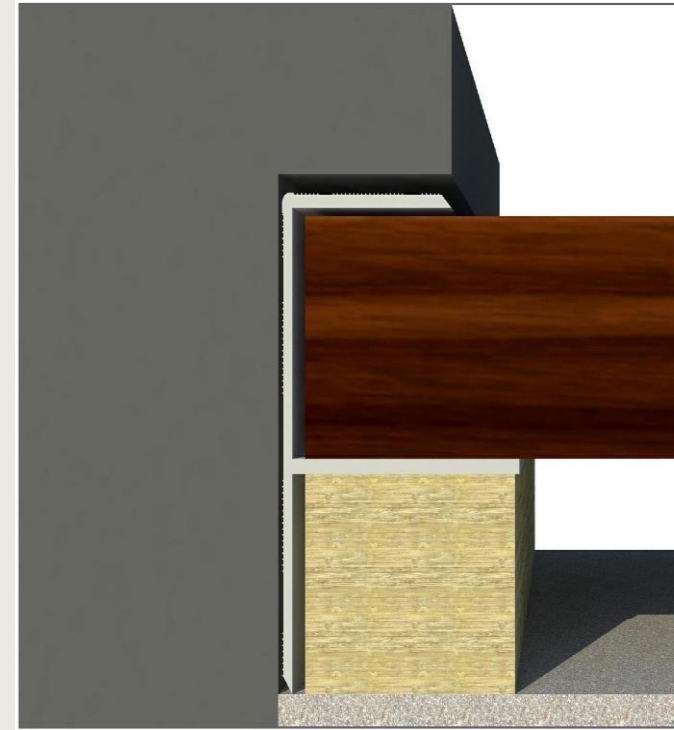
Size of panel : 218mm x25mm x2400m m  
Area Per panel : 5.63 Sq ft  
Area per pack : 22.52 Sqft  
Pcs per pack : 4Pcs

# Installation Procedure

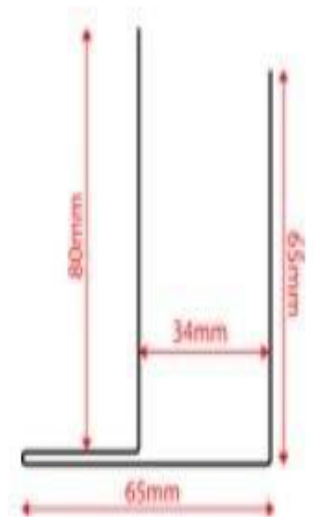
## Installation Procedure



## Finishing Profiles



**Finishing Profile**  
This profile is used to cover start and ends of the cladding areas. All profiles are available in solid and wood decors



**External Corner**  
This profile is used to cover outside corners. All profiles are available in solid and wood decors



3<sup>rd</sup> Floor, Konda Pride, Plot No. 1299, Road No. 1  
Jubilee Hills, Hyderabad, Telangana 500033.

+91 40 23606036, +91 7337255578

info@natural-elements.in



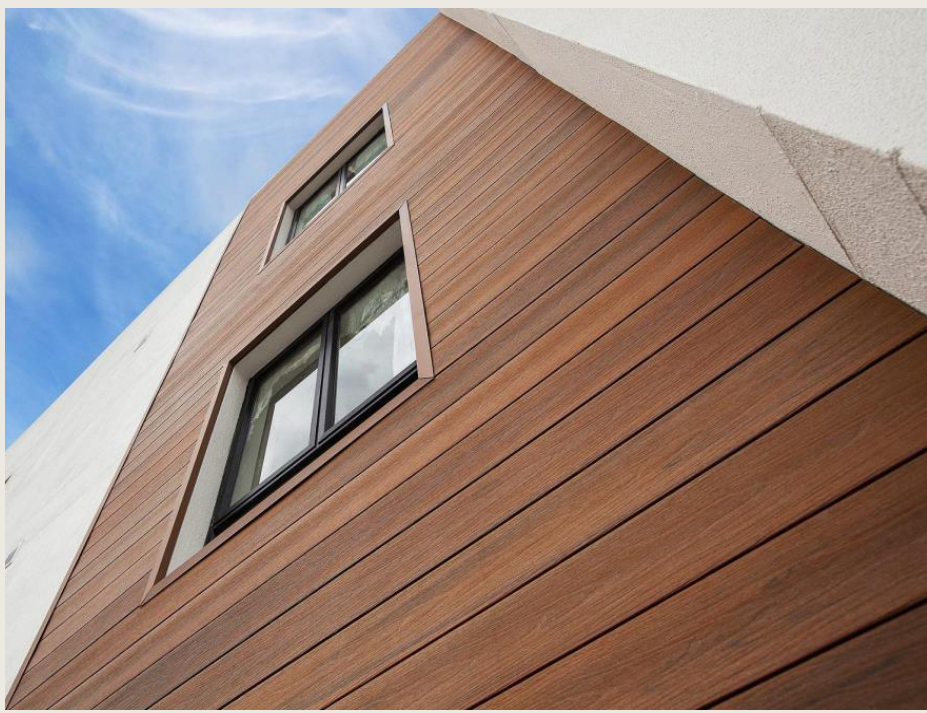


## WPC Cladding CASTILLO

The Castillo Cladding is the future of sustainable timber Facades.

They are combination of ground breaking sustainable design & state of the art production.

Produced in India by Himalaya Global in the advanced 80,000Sqft production plant ,Castillo Cladding panels are composite Facades made of 60% natural timber and 40% recycled polymer. The Castillo Cladding panels are designed to look like natural timber but need zero maintenance.

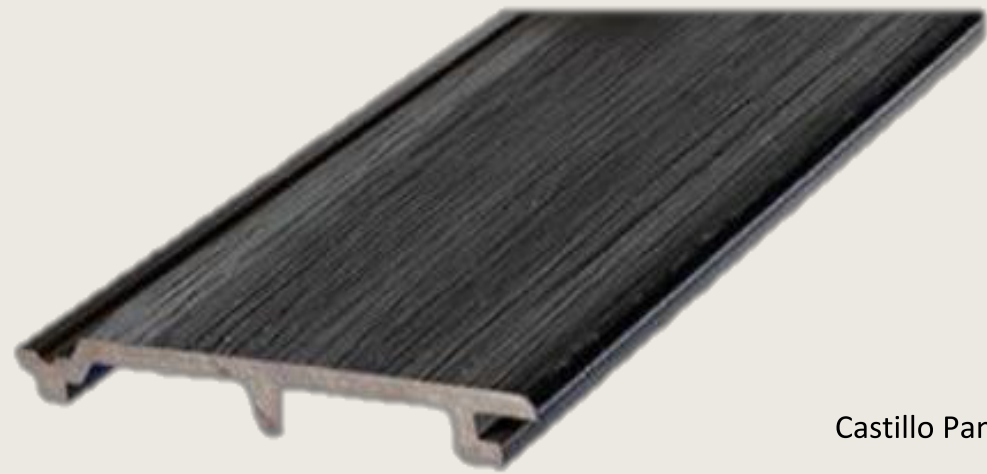




# Properties

Castillo composite cladding system provides all the low-maintenance, long-lasting and environmental benefits of composite in a smart cladding solution. With Castillo, cladding can now be easily installed even at great heights through the smart engineered clip strip. Now you can enjoy the look, function and lifestyle benefits of CASTILLO COMPOSITES for your siding and cladding project.

## Superiority by Design



Castillo Panel

Castillo panels are unique in both design and installation technique.

Castillo panels are an advanced 2<sup>nd</sup> generation co extruded wood composite cladding with an hybrid polymer capping surface layer, which provides **a unique colour variation like natural timber** and also perform in harsh outdoor conditions.

The installation is using a custom clip strip which allows a fast and sturdy installation.

**Panel size : 163mm x 20mm x 2400mm**

For projects, custom lengths are also possible



Castillo Strip

## Spoilt for Choice

Castillo is available in 8 fabulous colors



Cypress



Maple



Dew



Ash



Nairobi



Oslo



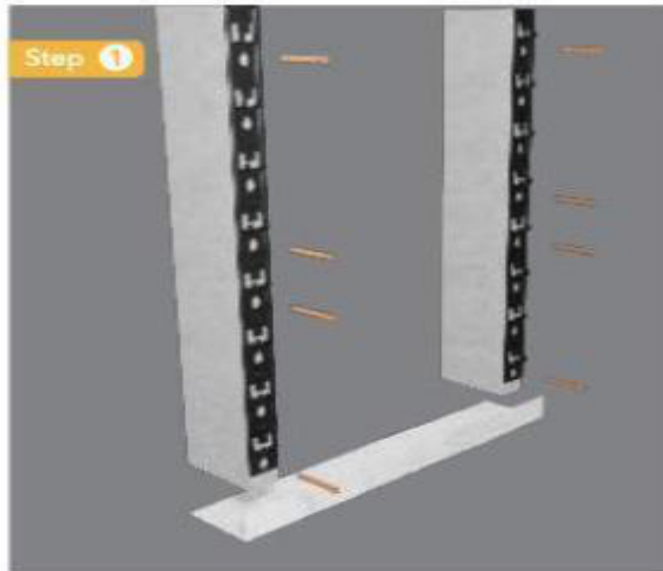
Berlin



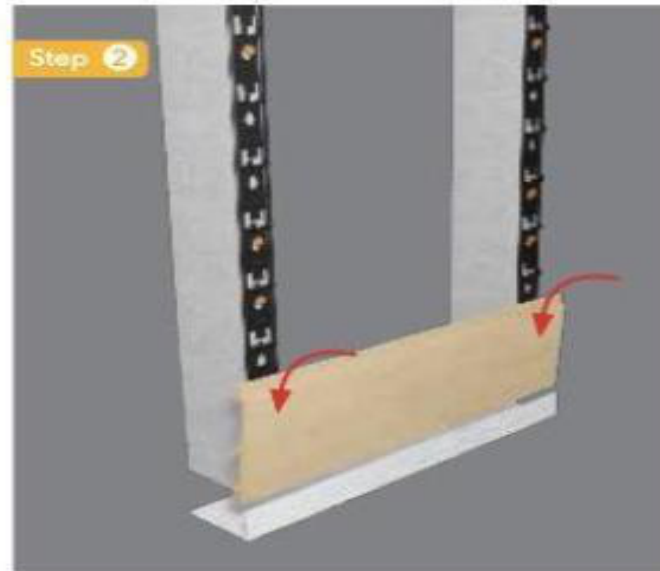
Brazilian Walnut



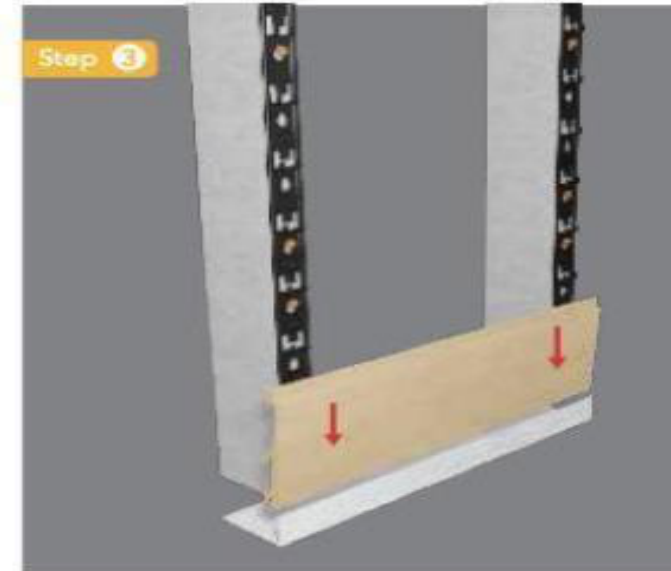
# Installation System explained



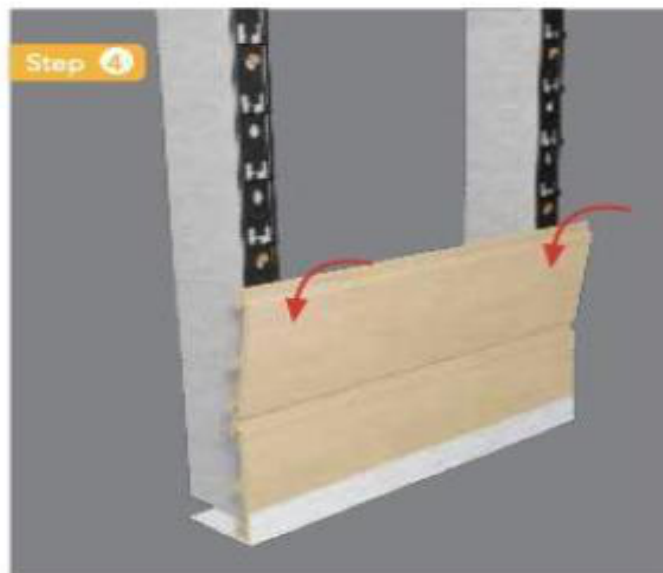
**Step 1**  
Fasten the cladding clip to the substructure using an appropriate fastening system. Ensure vertical and horizontal alignment.



**Step 2**  
Once clips are securely fastened, install the boards from the bottom up. Insert each board at a slight angle to engage the feet of the board with the ledge of the clip.



**Step 3**  
With the feet in place, apply downward pressure to click the board into place.



**Step 4**  
Install the next board using the same process as in step 2 but engage both the clip ledge and the tongue of the previous board.



**Step 5**  
Once the board is in place and appropriately aligned press downward until the board is clicked into place.



**Step 6**  
Install trim where required to finish.



**Both horizontal & vertical installations are possible**

Castillo is conveniently versatile. The same components and approach are employed for the installation of boards in vertical, horizontal or even diagonal laying patterns.





NATURAL  
ELEMENTS

📍 3<sup>rd</sup> Floor, Konda Pride, Plot No. 1299, Road No. 1  
Jubilee Hills, Hyderabad, Telangana 500033.

☎ +91 40 23606036, +91 7337255578

✉ info@natural-elements.in



## WPC Cladding Amer

The Amer cladding panels by Alfresco is the future of sustainable timber facades. They are a combination of ground breaking sustainable design & state of the art production.

Produced in India by Himalaya Global in the advanced 1,00,000 Sq ft production plant, Amer panels are our new variation in the already popular and market leading Cascade Panels. Amer is made of 60% natural timber and 40% recycled polymer. The panel's construction is a wood plastic composite (WPC) core encased by a hybrid high performance polymer capping.

The Amer panels are designed to look like natural timber but need zero maintenance.



Amer profiles are available in 6 more wonderful colors



**Berlin**



**Dew**



**Clarion**



**Ash**



**Brazilian walnut**

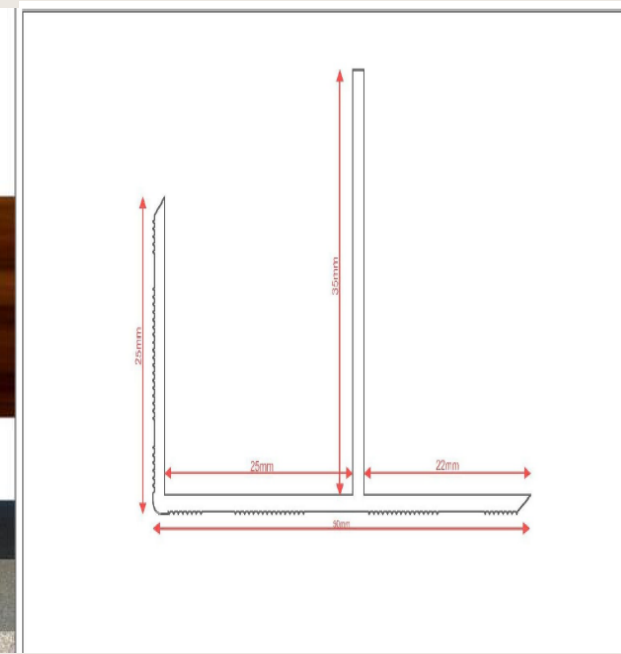


**Oslo**

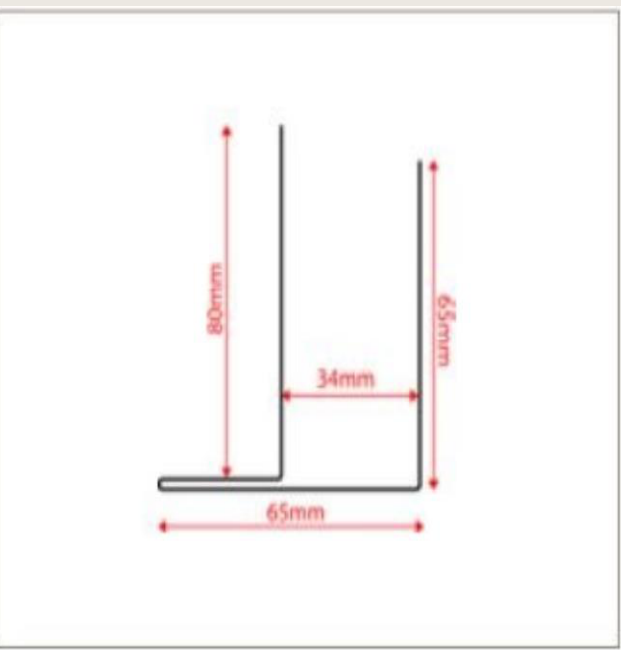
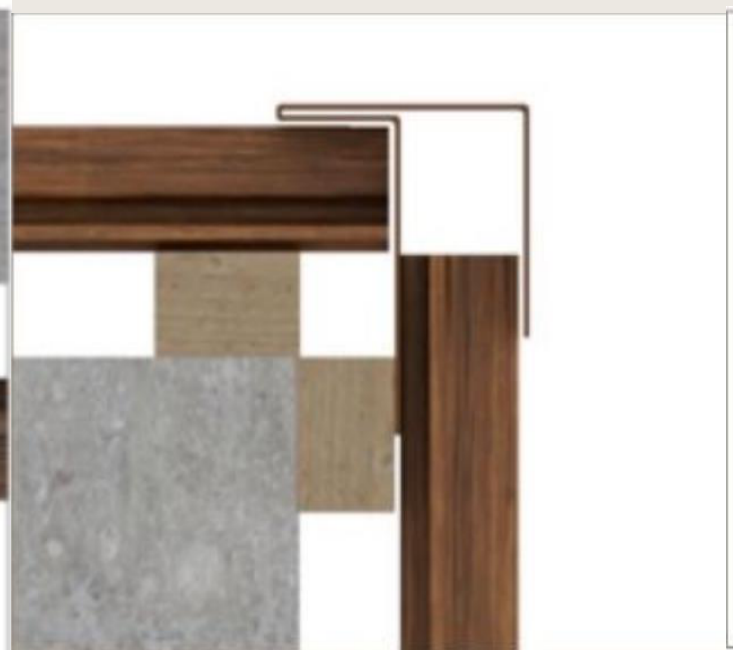
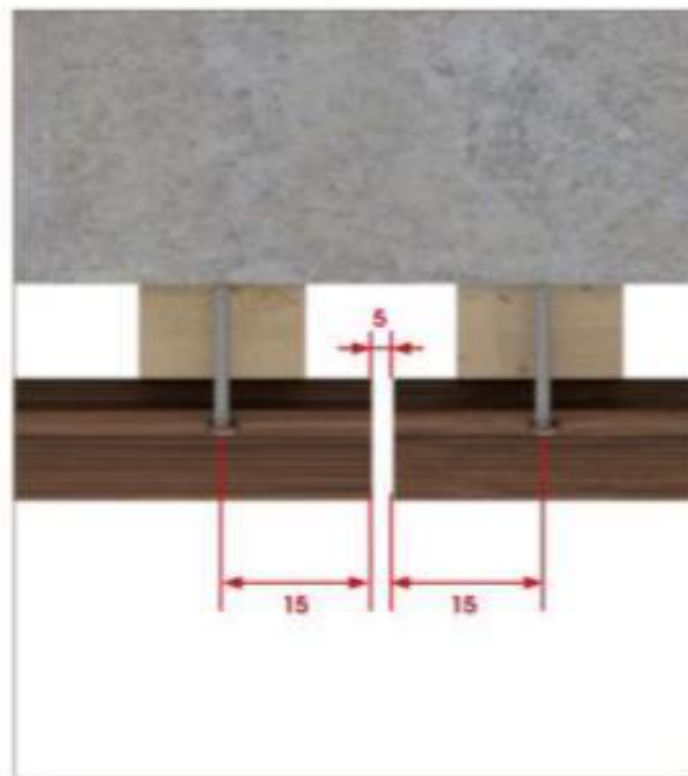
Size of panel : 213mm x 24mm x 2400mm  
Area Per panel : 5.50 Sq ft  
Area per pack : 22.01 Sq ft  
Pcs per pack : 4Pcs



# Installation Procedure



**Finishing Profile**  
This profile is used to cover start and ends of the cladding areas. All profiles are available in solid and wood decors



**Exterior Corner**  
This profile is used to cover outside corners. All profiles are available in solid and wood decors



3<sup>rd</sup> Floor, Konda Pride, Plot No. 1299, Road No. 1  
Jubilee Hills, Hyderabad, Telangana 500033.  
+91 40 23606036, +91 7337255578  
info@natural-elements.in



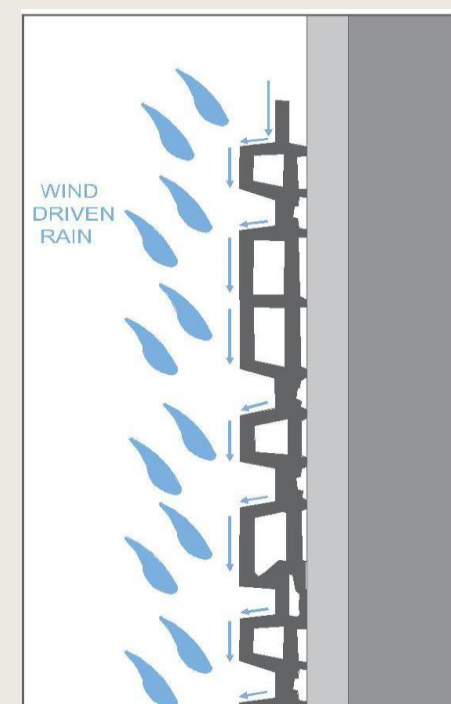


## WPC Cladding

### VARIO

The Cascade Vario cladding panels by Alfresco is the future of sustainable timber facades. They are a combination of ground breaking sustainable design & state of the art production.

Produced in India by Himalaya Global in the advanced 1,00,000 Sqft production plant, Cascade Vario panels are our new variation in the already popular and market leading Cascade Panels. Cascade Vario is made of 60% natural timber and 40% recycled polymer. The panel's construction is a wood plastic composite (WPC) core encased by a hybrid high performance polymer capping. The Cascade Vario panels are designed to look like natural timber but need zero maintenance.

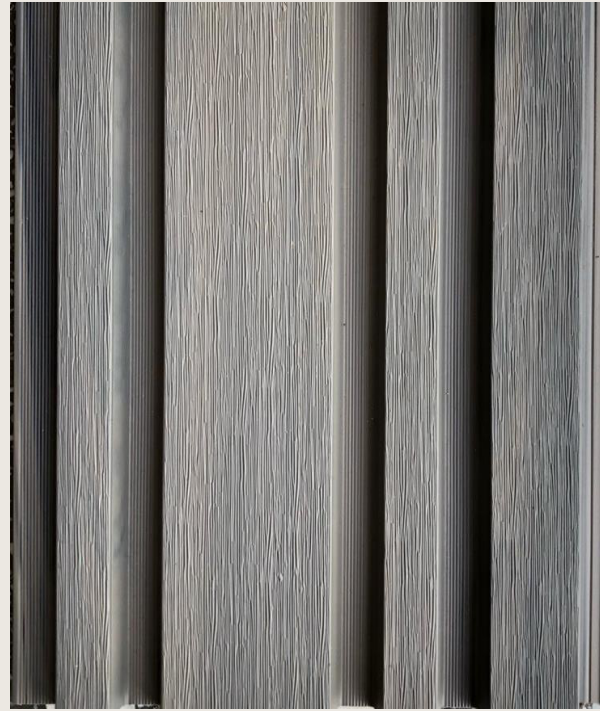




Cascade Vario are available in 6 wonderful colors



Berlin



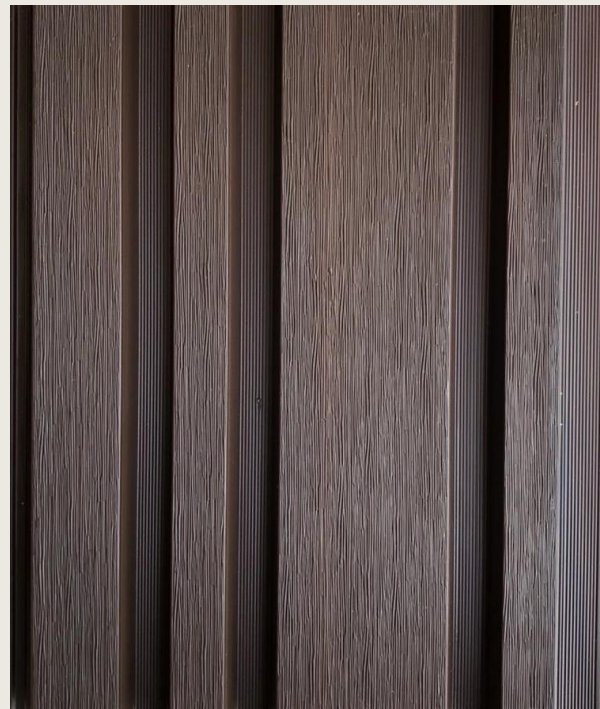
Dew



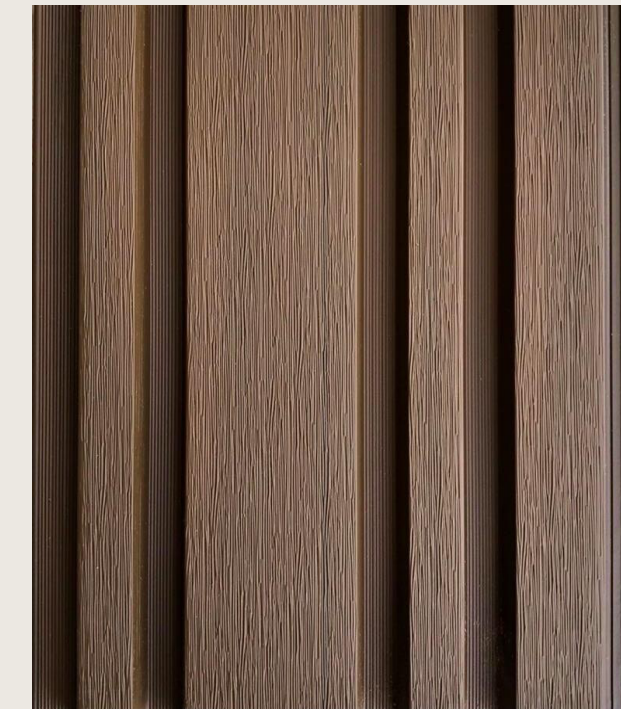
Nairobi



Ash



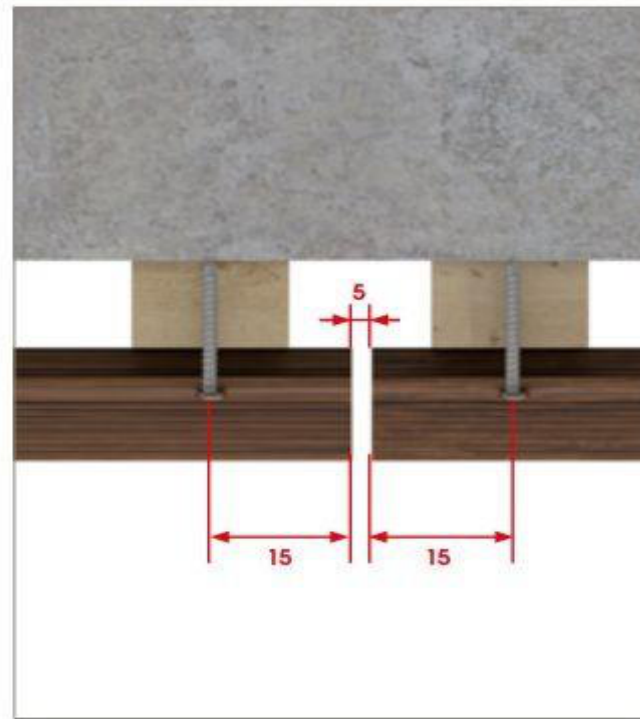
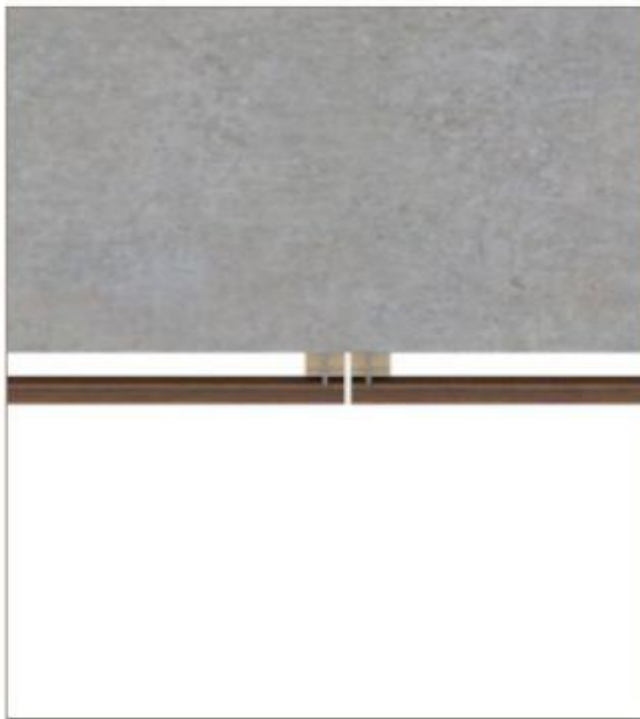
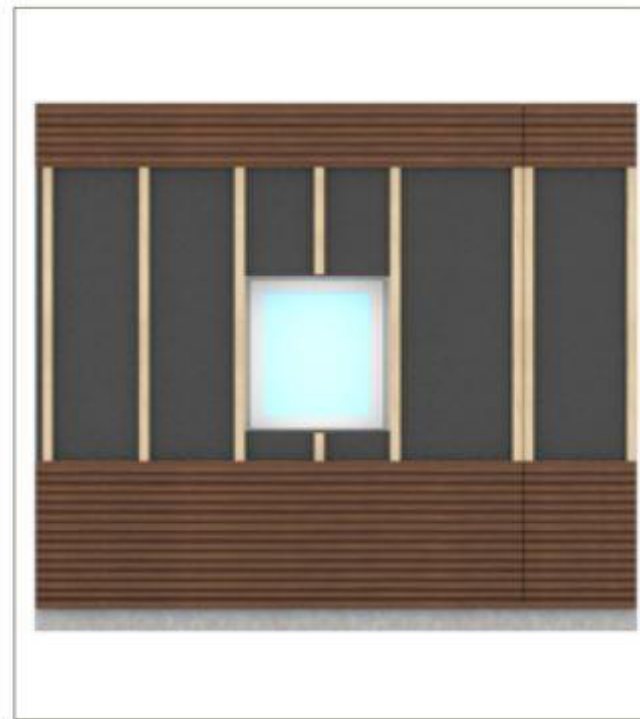
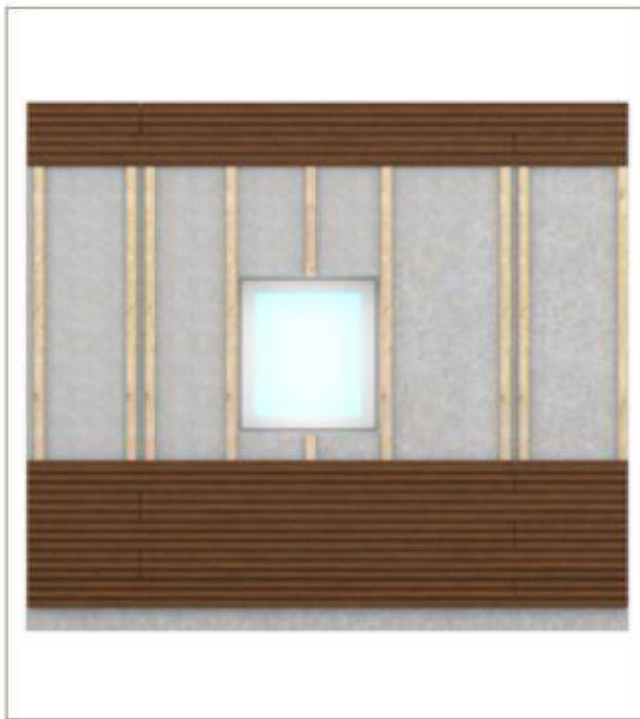
Brazilian walnut



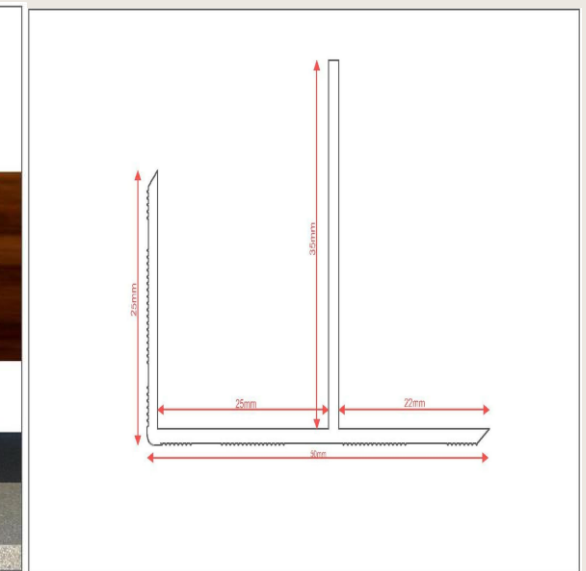
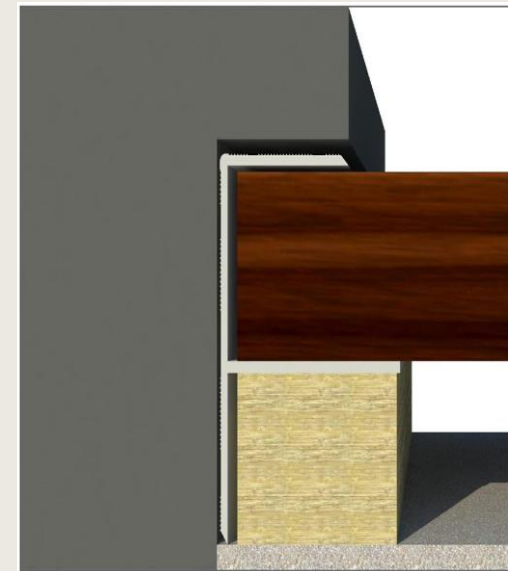
Oslo

size of panel : 218MM x25MM x2400MM area  
per panel : 5.63 sq ft  
area per pack : 22.52 sqft  
pcs per pack : 4pcs

## Installation procedure

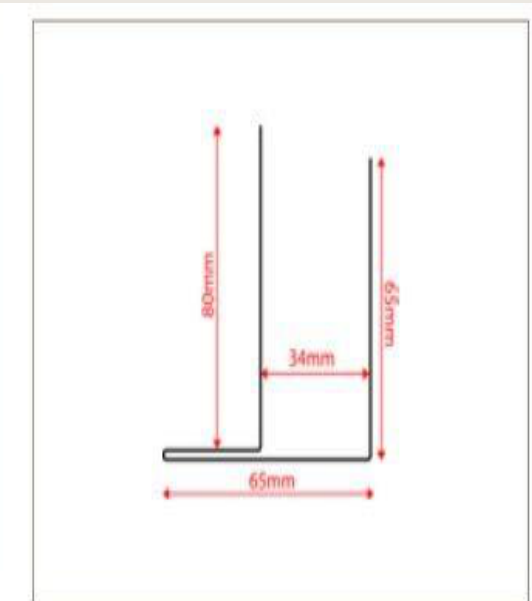


## Finishing profiles



### Finishing profile

This profile is used to cover start and ends of the cladding areas. All profiles are available in solid and wood decors



### External corner

This profile is used to cover outside corners. All profiles are available in solid and wood decors

